

Southwest Grief Coalition
Interdenominationally sponsored
by these Eden Prairie Churches:

Spring 2012

● **SPRING 2012 LOCATION**

Eden Prairie United Methodist Church

15050 Scenic Heights Road
Pastor Dan Schneider-Bryan
952-937-8781 / www.prairiechurch.org

● **Immanuel Lutheran Church**

16515 Luther Way
Pastor Susan Weaver
952-937-8123 / www.immanuel.us

● **Pax Christi Catholic Community**

12100 Pioneer Trail
Jane Schmitz, Pastoral Care Director
952-941-3150 / www.paxchristi.com

● **St. Andrew Lutheran Church**

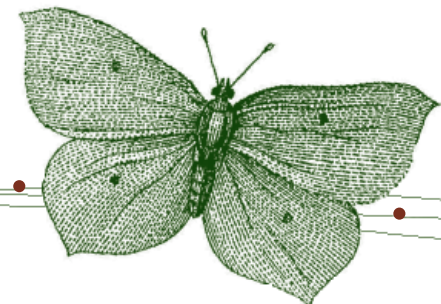
13600 Technology Drive
Pastor Tasha Genck Morton
952-937-2776 / www.standrewlu.org

Living and Growing Through Loss

Sponsored by
Southwest
Grief Coalition



Eden Prairie United Methodist Church



• Grieving

Losing someone we love is one of life's most challenging passages. Learning about this process of grief, along with sharing our experience in a caring, supportive, and confidential setting, helps us to cope and leads to personal growth and healing.

These Eden Prairie churches of the Southwest Grief Coalition are working together to provide support and education for those who are grieving.

• Our Purpose

To provide an opportunity for individuals to obtain information and support for a variety of loss and grief issues.

We encourage you to attend the entire series.



• Session Format

- 5:30–6:00pm Gathering (*light supper provided)
- 6:00–6:30pm Speaker
- 6:30–7:30pm Adult Small Groups
- 6:00–7:30pm Children's Group**

*A light supper is provided each evening. There is no cost to participate in Living and Growing through Loss. Church affiliation is not required.

**Children's Group (ages 8–12)

Telephone interviews are necessary before attendance in children's group due to the sensitive nature of the topic and ages of the attendees. Registration for Children's Group: Call Karen Atkins, 952-460-0030.

To register for free childcare, call Shirley Hutchins, 952-934-4650.

Spring 2012 Location: Eden Prairie United Methodist Church

15050 Scenic Heights Road
Eden Prairie, MN 55344

• April 12

"Grief and Identity... Who Am I Now?"
Lee Erickson, MA
Center for Grief, Loss, & Transition

• April 19

"Crazy is the New Norm"
Chaplain Janelle Weum
Friendship Village, Bloomington

• April 26

"Hope within the Grief"
Bob Bartlett, MA, MFT
Phoenix Process Consultants

• May 3

"Grief and Identity"
Joe Nobel, MA, LAMFT
Phoenix Process Consultants

• May 10

"Music and Poetry: Be Still and Know God's Presence"
Shirley Hutchins, Parish Nurse

• May 17

"Moving Forward in Grief"
Pastor Dan Schneider-Bryan
Eden Prairie United Methodist Church

• Education

Each session contains both an education segment and a time for sharing in small groups. Each week a speaker will present a topic to help participants understand the bereavement process. We accept registrations for adult small groups for the first two weeks of the series.

• Small Group Support

People experiencing similar losses will have the opportunity to meet in small groups to share concerns and feelings following the speaker. These groups include:

- Loss of a spouse/partner
- Loss of a parent
- Loss of a child
- Loss of family member/friend
- Suicide Survivors
- Young Adult Group (20 – 35)
- Teen Group (ages 13 – 19)
- Children's Group (ages 8 – 12)**

Small groups are facilitated by those who are trained in the grief process and group dynamics. Many have experienced the death of a loved one.



In some ways, love and grief are very much alike; they both have the power to forever change our lives. Just as I must surrender to love, I must surrender to my grief.

–Alan Wolfelt